



### 311SM703-T



*Actual product appearance may vary.*

**SM Series Subminiature Basic Switch, Single Pole Double Throw (SPDT), 250 Vac, 4 A, Straight Lever Actuator, Solder Termination**

#### Features

- Long operating life
- Elongated mounting hole for easier, more accurate mounting
- Choice of actuation (plunger, as well as a variety of integral and auxiliary actuators)
- Choice of electrical termination (solder, quick connect, PCB)
- Choice of operating characteristics (sensitive differential travel as low as 0,0254 mm [0.001 in] maximum, low operating force to 0,56 N [2.0 oz] maximum)
- Optional series constructions available (gold contacts for low energy switching, bifurcated gold contacts for maximum reliability, power load switching capability to 11 A)
- MIL-PFR-8805 qualified listings available

#### Potential Applications

- Aerospace
- Instrumentation
- Appliances
- Vending machines
- Timing devices
- Office equipment
- Computer/business equipment
- Test instruments
- Medical/dental equipment
- Communications equipment
- HVAC equipment
- Manually operated devices
- Valves

#### Description

MICRO SWITCH™ SM Series subminiature basic switches are used for simple or precision on/off application needs. The MICRO SWITCH™ SM Series switches are slightly larger than the MICRO SWITCH™ SX Series switches. These switches combine small size and light weight with ample electrical capacity, precision operation and long life.

#### Product Specifications

Switch Type	MICRO SWITCH™ Subminiature 12,7 mm H x 6,35 mm W x 20,3 mm L [0.5 in H x 0.25 in W x 0.8 in L]
Sealed	No
Ampere Rating	4 A
Circuitry	Single Pole Double Throw (SPDT)
Actuator	Straight Lever
Termination	Solder

Operating Temperature Range	-55 °C to 125 °C [-67 °F to 257 °F]
Voltage	250 Vac
Approvals	CE,CSA,UL,ENEC
Actuator Length	44,8 mm [1.765 in]
Contact Type	Silver
Operating Force (O.F.)	0,06 N [0.2 oz] max.
Release Force (R.F.)	0,01 N [0.04 oz] max.
Pretravel (P.T.)	7,87 mm [0.310 in] max.
Overtravel (O.T.)	1,45 mm [0.057 in] min.
Differential Travel (D.T.)	1,78 mm [0.070 in] max.
Operating Position (O.P.)	7,11 mm ± 4,3 mm [0.280 in ± 0.170 in]
Housing Material	General Purpose Phenolic
High Temperature	204 °C [400 °F]
CE mark	61058-1
UL File #	E12252
CSA File #	LR41372
Agency Approvals and Standards	1054
Mounting Centers	9,65 mm [0.38 in]
Maximum Tightening Torque	0,26 N m [2.3 in lb]
Weight	2,72 g [0.006 lb]
Package Height	12,4 mm [0.49 in]
Package Width	6,35 mm [0.25 in]
Package Length	19,8 mm [0.78 in]
Recommended For	Lower force
Availability	Global
UNSPSC Code	30211905
UNSPSC Commodity	30211905 Snap switches
Series Name	SM

---

# MICRO SWITCH

FREERPORT ILLINOIS, U.S.A  
A DIVISION OF HONEYWELL

FED. CODE. CODE 91929

# SWITCH - BASIC

CATALOG LISTING

## 311SM703-T

DRAWING NUMBER  
**311SM703-T**

PAGE 1 OF 1

REPLACES

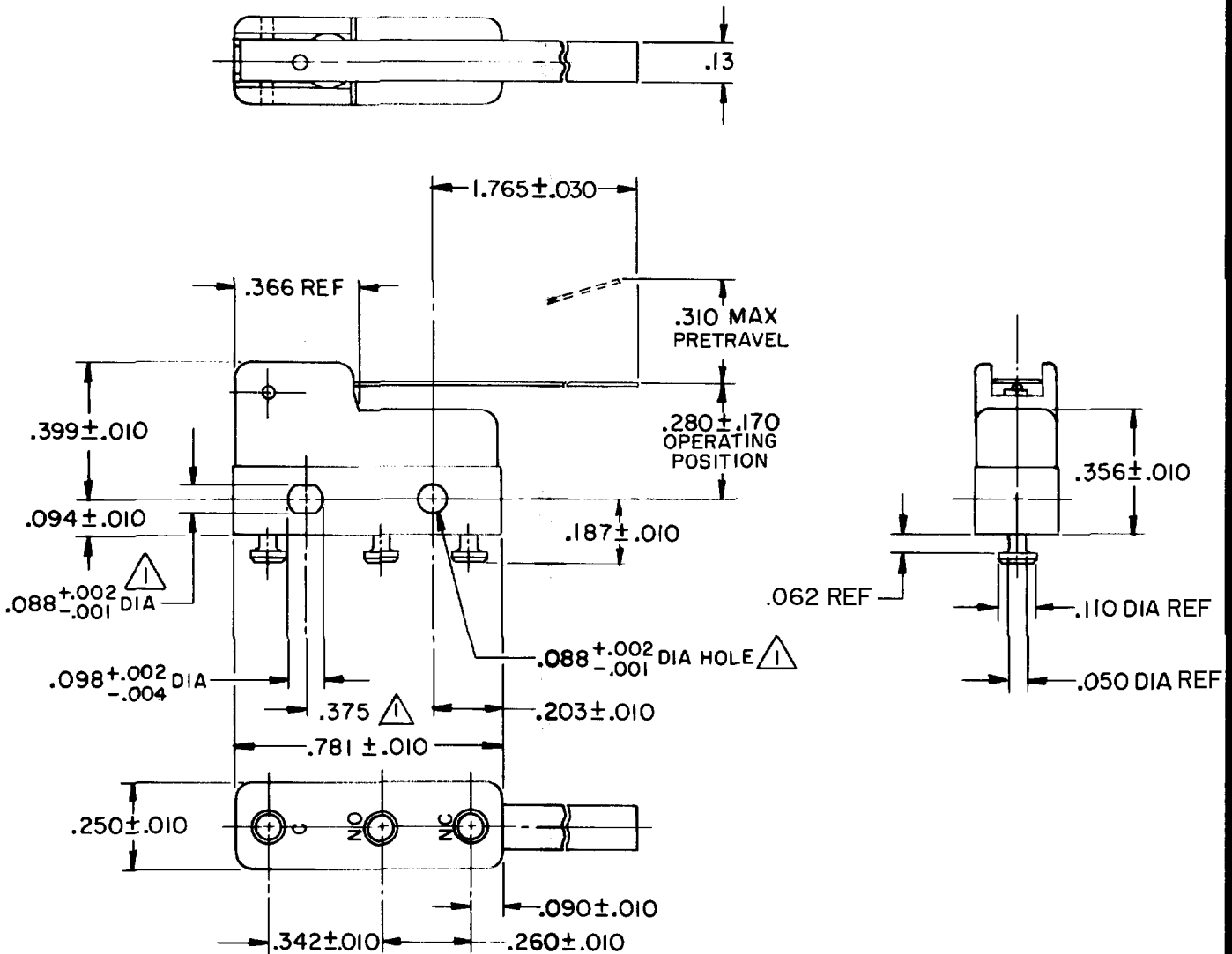
RELEASE NO. PR-275

ISSUE  
**M**

6

REVISIONS

A	C031079	RE R	27 NOV 72
B	CO-95172	J J A	21 JUNE 99
C	C095591	DLT	28 OCT 99



NOTES

- 1- MOUNTING HOLES WILL ACCEPT PINS OR SCREWS OF .087 MAX DIA ON .375 ± .002 CENTERS
- 2- SWITCH WILL WITHSTAND TEMPERATURE OF 250°F
- 3- TERMINALS ARE PLATED FOR SOLDERING

THIS DRAWING COVERS A PROPRIETARY ITEM AND IS THE PROPERTY OF MICRO SWITCH, A DIVISION OF HONEYWELL. THIS DRAWING IS NOT TO BE COPIED OR USED WITHOUT THE APPROVAL OF MICRO SWITCH.

**CHARACTERISTICS**

OPERATING FORCE - - - - - 6 GRAM MAX  
RELEASE FORCE - - - - - 1 GRAM MIN  
DIFFERENTIAL TRAVEL - - - - .070 MAX  
OVERTRAVEL - - - - - .057 MIN

**ELECTRICAL DATA**

CONTACT ARRANGEMENT  
S P D T

30 VOLTS DC RATING

INDUCTIVE - - - - SEA LEVEL - 3 AMP  
50,000 FT - - - 2.5 AMP

RESISTIVE - - - - SEA LEVEL - 5 AMP  
50,000 FT - - - 5 AMP

MAXIMUM INRUSH - - - - -24 AMP

L119

4A 250 VAC



SCALE 2 TO 1

DO NOT SCALE PRINT

UNLESS OTHERWISE NOTED  
DIMENSIONS ARE IN INCHES  
**TOLERANCES ARE**

ONE PLACE (.0) ± .030  
TWO PLACE (.00) ± .015  
THREE PLACE (.000) ± .005  
ANGLES ±

WEIGHT .006 LB MAX

FORMTEK

FO-52848

DRAWN

RE R 27 NOV 72 CHECK LSD 11 DEC 72 CHECK PRW 11 DEC 72 CHECK